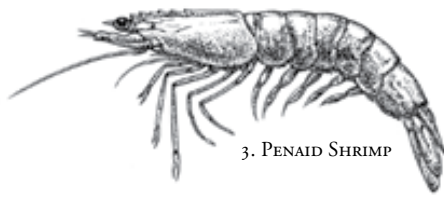




1. MUMMICHOG



2. CARP



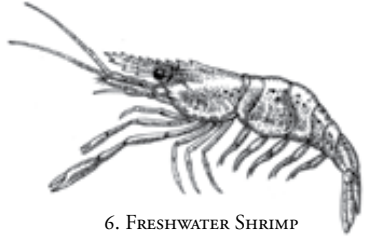
3. PENOID SHRIMP



4. TIDEWATER SILVERSIDE  
*Atlantic Silverside\**



5. JAPANESE MEDAKA



6. FRESHWATER SHRIMP  
*\*Cherry Shrimp*



7. ZEBRA DANIO



8. MACOMA CLAM



9. CLAM WORM



10. STONE FLY  
(NYMPH)



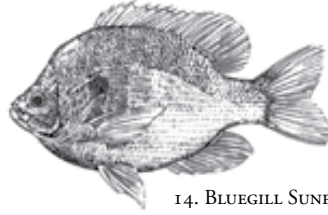
11. SHEEPSHEAD MINNOW



12. SAND SHRIMP



13. MYSID (OPOSSUM) SHRIMP



14. BLUEGILL SUNFISH



15. FATHEAD MINNOW (MALE)



16. FATHEAD MINNOW (FEMALE)



24. HORSESHOE CRAB



17. MAYFLY (NYMPH)



18. MARINE AMPHIPOD



19. FRESHWATER ALGAE



20. MARINE ALGAE



21. MARINE ALGAE



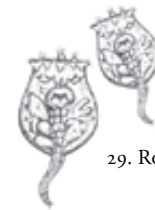
22. DAPHNIA  
*Ceriodaphnia\**



23. SIDESWIMMER



26. MIDGE LARVAE



29. ROTIFER



30. SAND DOLLAR



27. CRAYFISH



28. COPEPOD



25. DUCKWEED



# Aquatic Research Organisms

## ARO

QUALITY      DIVERSITY      DEPENDABILITY



31. MARINE ALGAE



32. MARINE ALGAE



33. FRESHWATER ALGAE



34. FRESHWATER ALGAE



35. CHAMPIA



37. WINTER FLOUNDER  
*Sandab\**



38. PLAICE  
*Turbot\**



39. PURPLE SEA URCHIN



40. RAINBOW TROUT



36. AMERICAN OYSTER  
*Pacific Oyster\**



41. GOLDEN ORFE



42. GOLDEN SHINER  
*Bannerfin Shiner\**



43. WORMS  
*\*Earth, Aquatic, Red, White, Pot, Tubifex*



44. QUAHOG



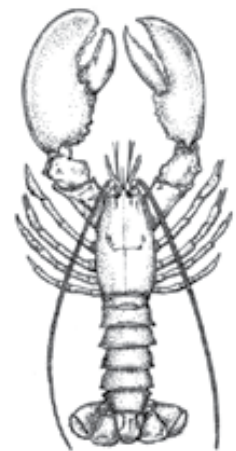
45. BLUE CRAB



46. LEECH



47. THREE-SPINED STICKLEBACK



48. NORTHERN LOBSTER



49. LONGNOSE KILLIFISH



50. BLUE MUSSEL



51. GUPPY



53. GRASS SHRIMP



55. CHANNEL CATFISH  
*\*Brown Bullhead*



56. SEA HARE



52. GAMBUSIA



57. TADPOLE



54. ABALONE

1. *Fundulus heteroclitus*
2. *Cyprinus carpio*
3. *Penaeus* sp.
4. *Menidia beryllina*/*Menidia menidia*
5. *Oryzias latipes*
6. *Neocaridina denticulata*
7. *Danio rerio* (*Brachydanio*)
8. *Macoma* sp.
9. *Nereis virens*
10. *Pteronarcy* sp.
11. *Cyprinodon variegatus*
12. *Crangon septempinnatus*
13. *Mysidopsis bahia*/*Americamysis bahia*
14. *Lepomis macrochirus*
15. *Pimephales promelas* (m)

16. *Pimephales promelas* (f)
17. *Baetis* sp./*Hexagenia* sp.
18. *Ampelisca abdita*/*Lepidocheirus plumulosus*
19. *Seleustrium capricornutum*/*Pseudokirchneriella subcapitata*
20. *Ischrysis galbana*
21. *Thalassiostra oceanica*
22. *Daphnia magna*/*D. pulex*/*Ceriodaphnia dubia*
23. *Gammarus fasciatus*/*Hyalella azteca*
24. *Limulus polyphemus*
25. *Limnaea minor*
26. *Chironomus tentans* (dilutus) *C. riparius*
27. *Oreocetes* sp./*Cambarus* so.
28. *Acartia tonsa*
29. *Branchionus plicatilis*

30. *Dendroaster* sp./*Echinarrachnius* sp.
31. *Skeletonema costatum*
32. *Phaeodactylum tricornutum*
33. *Ankistrodesmus* sp.
34. *Scenedesmus abundans*
35. *Champia parvula*
36. *Crasostrea virginica*/*Crasostrea gigas*
37. *Pseudopleuronectes americanus*/*Citharichthys stigmaceus*
38. *Pleuronectes platessa*/*Scophthalmus maximus*
39. *Arbacia punctulata*
40. *Oncorhynchus mykiss*
41. *Leuciscus idus*
42. *Notemigonus crysoleucas*/*Notropis leedsii*
43. *Lumbriculus* sp./*Eisenia* sp./*Enchytraeus* sp./*Tubifex* sp.

44. *Mercenaria mercenaria*
45. *Callinectes sapidus*
46. *Hirudo medicinalis*/*Nepheleopsis obscura*
47. *Gasterosteus aculeatus*
48. *Homarus americanus*
49. *Fundulus similis*/*Fundulus grandis*
50. *Mytilus edulis*
51. *Poecilia reticulata*
52. *Gambusia holbrooki*
53. *Palaemonetes pugio*
54. *Haliotis rufescens*
55. *Ictalurus punctatus*/*I. nebulosus*
56. *Aplysia* sp.
57. *Bufo* sp./*Rana* sp.
58. *Salvelinus fontinalis*/*Salmo trutta*  
*\*similar species, not illustrated here.*



58. BROOK TROUT  
*\*Brown Trout*